

RECEIVER MANUAL




1. Features

- Work with all A-OK tubular motor
- SMT machine automatical assembly, dampproof craft
- Support of IR, RF, Manual control and DC 12V trigger
- Work with motorized projection screen


2. Parameters

Model N.	Voltage	Temperature	Receive distance	Loading Power	Frequency	Operation mode
	230VAC 50Hz	-40°C ~ +85°C	RF>80M IF>8M	≤ 500W	RF 433,92 HZ	RF, IR and Manual control, DVI2V trigger


! Warning




✓ Power off before wiring



✓ Avoid static damage

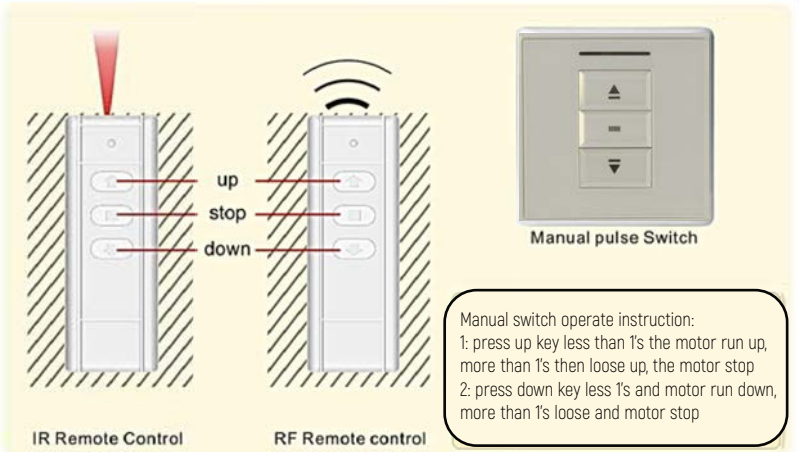
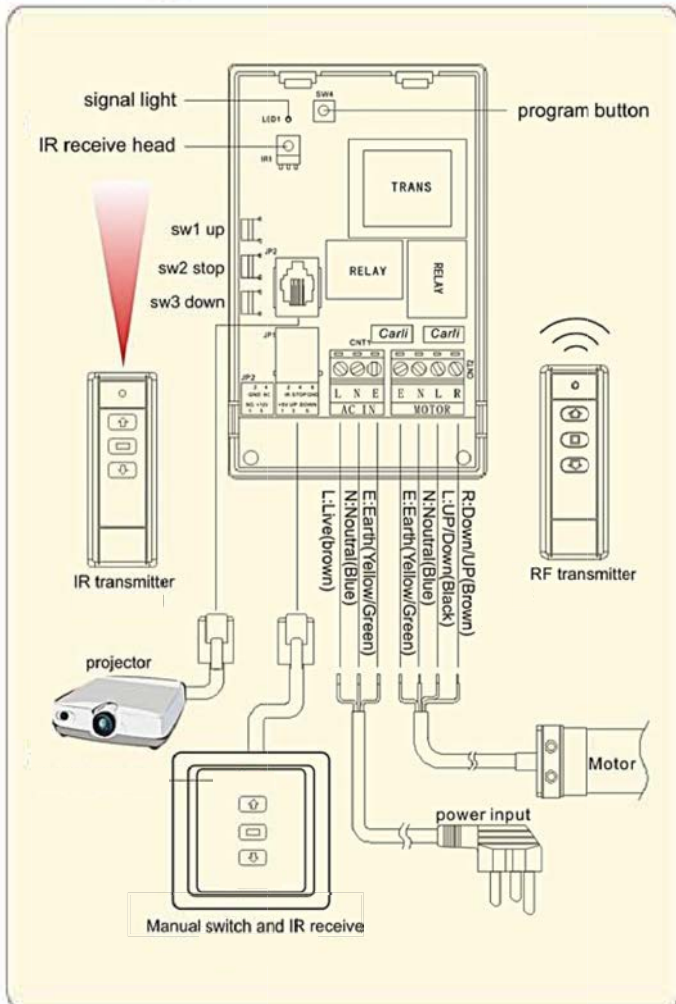


✓ Earth wire must be connected well and correctly



✗ To keep good control range, avoid connect metal parts

3. Wiring



Wiring

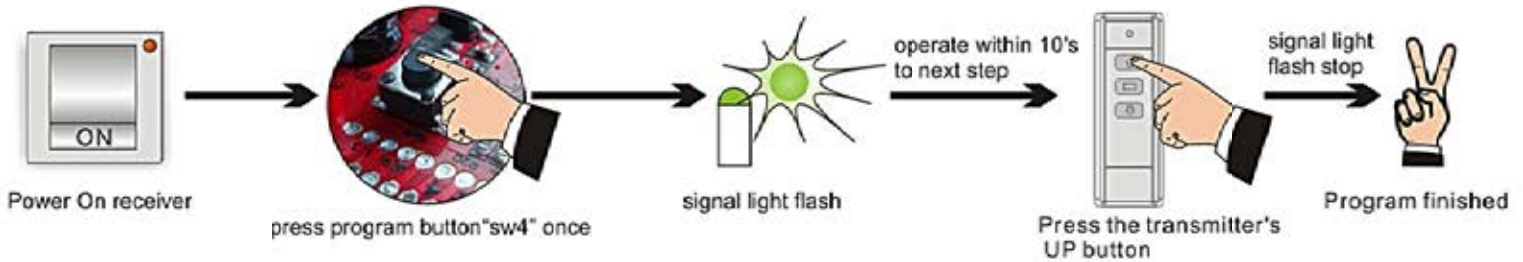
Motor wiring terminal E: Earth (Green/Yellow) N: Neutral (Blue) L: UP /Down (Black) R: Down/UP (Brown)	Power wiring terminal N: Neutral (Blue) E: Earth (Yellow/Green) L: Live (Brown)								
out-link projector terminal NC: empty terminal GND: earth wire +12V: DC trigger									
<table border="1" style="width: 100%;"> <thead> <tr> <th colspan="2">Manual switch wiring terminal</th> </tr> </thead> <tbody> <tr> <td>+5V: IR voltage</td> <td>S: stop (green)</td> </tr> <tr> <td>IR: IR signal</td> <td>D: Down/up (black)</td> </tr> <tr> <td>U: UP/DOWN (brown)</td> <td>G: Neutral (BLUE)</td> </tr> </tbody> </table>		Manual switch wiring terminal		+5V: IR voltage	S: stop (green)	IR: IR signal	D: Down/up (black)	U: UP/DOWN (brown)	G: Neutral (BLUE)
Manual switch wiring terminal									
+5V: IR voltage	S: stop (green)								
IR: IR signal	D: Down/up (black)								
U: UP/DOWN (brown)	G: Neutral (BLUE)								

Function Adjustment

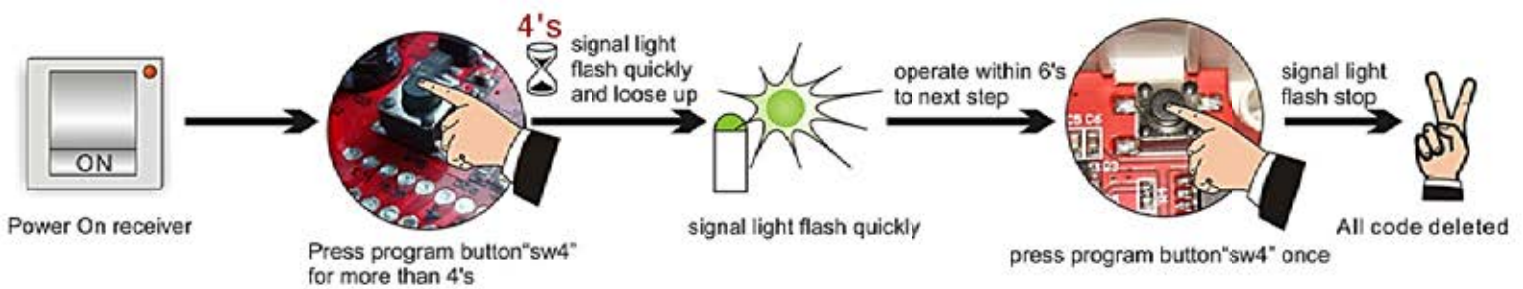
Remark:

- ① IR remote control must make program (same as RF operation), while within effective range.
- ② Receiver would come back the original state if there are not any operations within 10's.
- ③ Only total 20 IR or RF transmitter can be programmed with 1 receiver
- ④ The longest working time of motor is 5 minutes

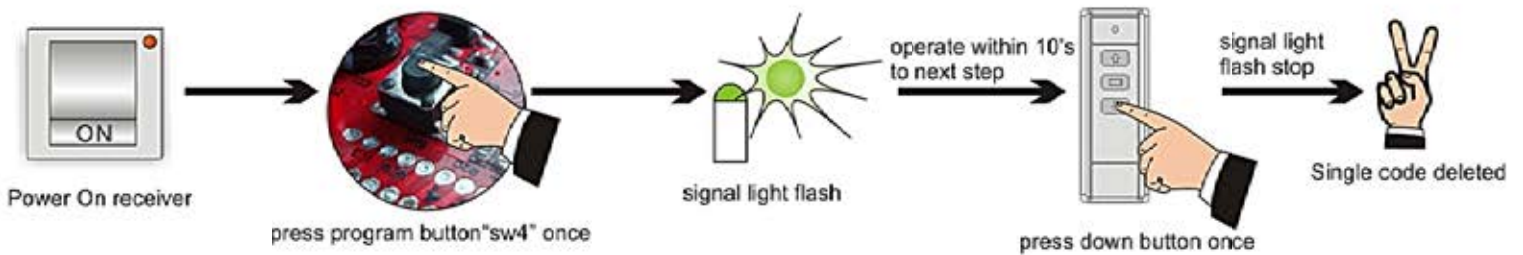
4. Program setting (select delete channel before operation)



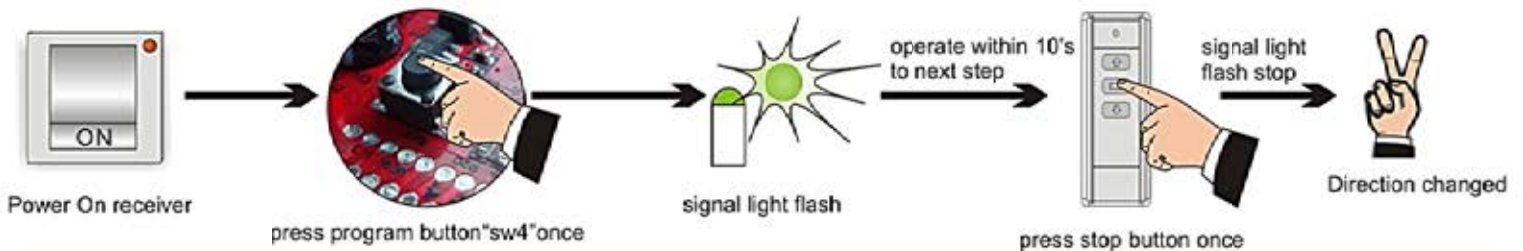
5. Delete all codes on receiver



6. Delete single code on receiver (select delete channel before operation)



7. Change direction



8. Troubles handle

Items	Trouble phenomenon	Test/Solution/ probable cause
1	When operate, the transmitter's LED1 work well, and the receiver doesn't action	Have a check with the receiver's wiring correct or not, or the program setting is OK
2	The transmitter's LED isn't bright or dark bright	Check the battery power is Ok or not (The battery install is OK or not)
3	The control system work well, but the motor is out of working	Checking the motor's wiring correct or not, and the motor had damage or not
4	Press up key, motor run down, press down key, motor run up	set change direction on control or exchange the up and down wire of motor