

# RECEIVER MANUAL



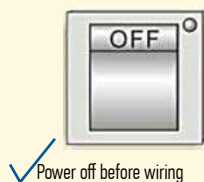
## 1. Features

- Work with all A-OK tubular motor
- SMT machine automatical assembly, dampproof craft
- Support of IR, RF, Manual control and DC 12V trigger
- Work with motorized projection screen

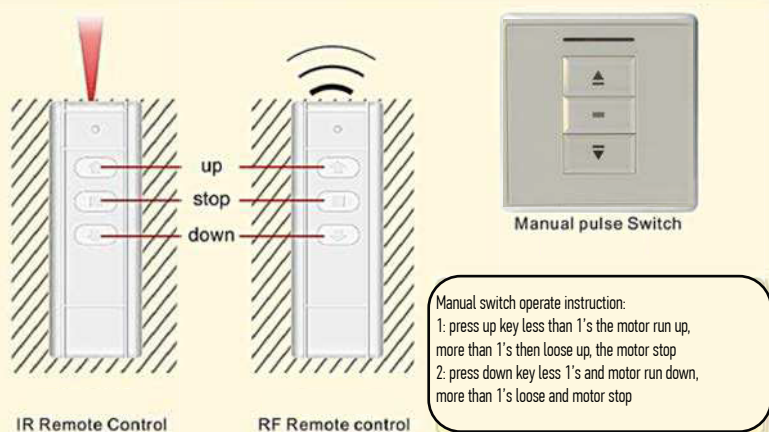
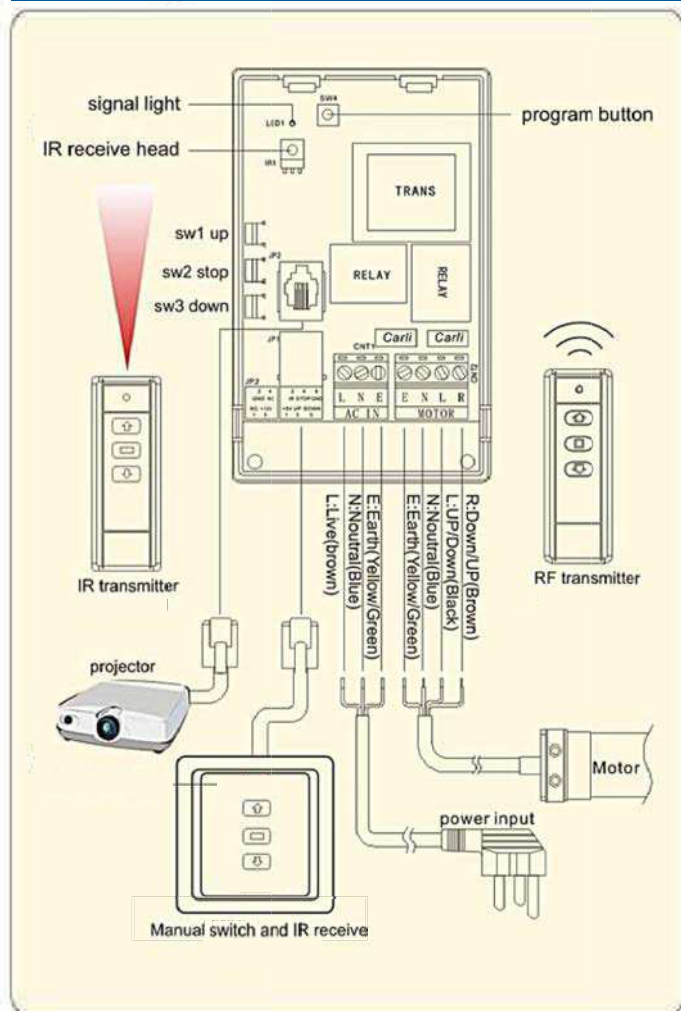
## 2. Parameters

Model N.	Voltage	Temperature	Receive distance	Loading Power	Frequency	Operation mode
	230VAC 50Hz	-40°C ~ +85°C	RF≥80M IF≥8M	≤ 500W	RF 433,92 HZ	RF, IR and Manual control, DV12V trigger

## ! Warning



## 3. Wiring



## Wiring

### Motor wiring terminal

E:Earth (Green/Yellow)  
N:Neutral(Blue)  
L:UP /Down(Black)  
R:Down/UP (Brown)

### out-link projector terminal

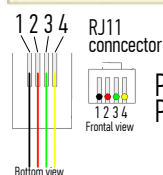
NC:empty terminal  
GND: earth wire  
+12V:DC trigger

### Manual switch wiring terminal

+5V:IR voltage  
IR:IR signal  
U:UP/DOWN(brown)  
S:stop(green)  
D:Down/up(black)  
G:Neutral(BLUE)

### Power wiring terminal

N:Neutral(Blue)  
E: Earth (Yellow/Green)  
L:Live(Brown)

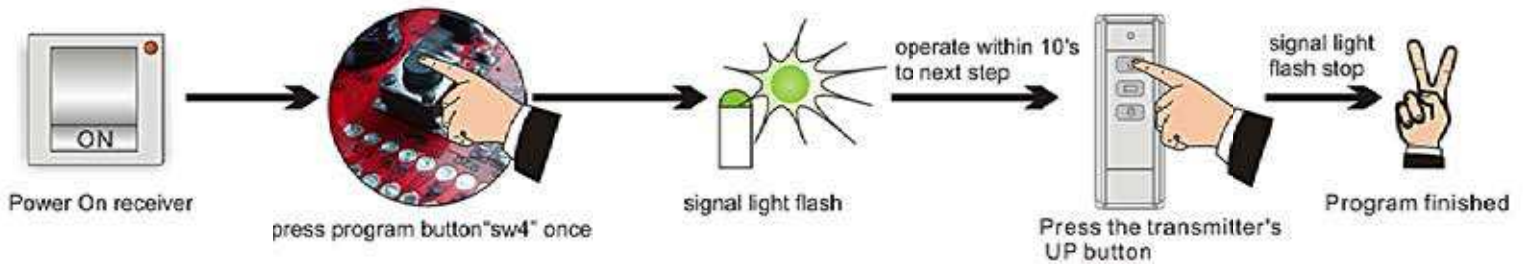


## Function Adjustment

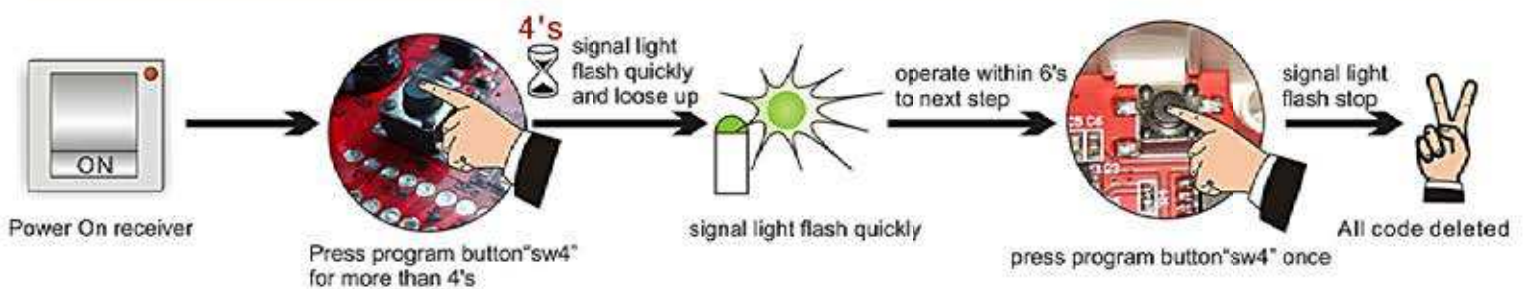
### Remark:

- ①IR remote control must make program (same as RF operation), while within effective range.
- ②Receiver would come back the original state if there are not any operations within 10's.
- ③Only total 20 IR or RF transmitter can be programmed with 1 receiver
- ④The longest working time of motor is 5 minutes

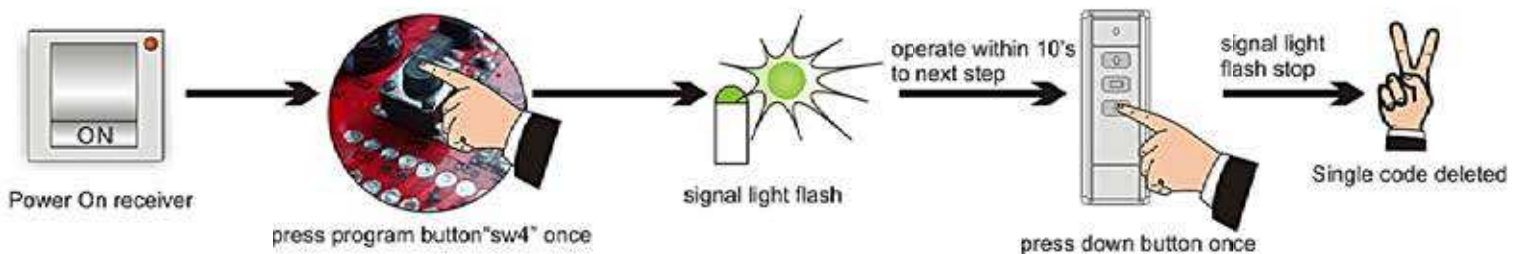
### 4. Program setting (select delete channel before operation)



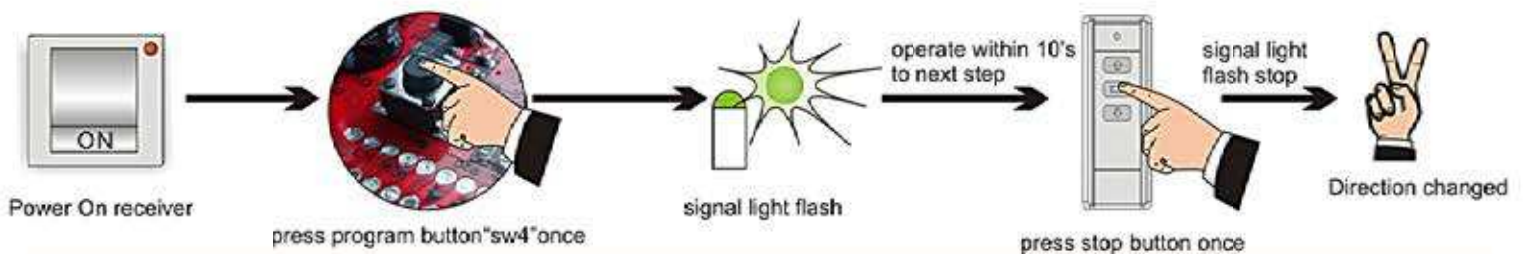
### 5. Delete all codes on receiver



### 6. Delete single code on receiver (select delete channel before operation)



### 7. Change direction



### 8. Troubles handle

Items	Trouble phenomenon	Test/Solution/ probable cause
1	When operate, the transmitter's LED1 work well, and the receiver doesn't action	Have a check with the receiver's wiring correct or not, or the program setting is OK
2	The transmitter's LED isn't bright or dark bright	Check the battery power is OK or not (The battery install is OK or not)
3	The control system work well, but the motor is out of working	Checking the motor's wiring correct or not, and the motor had damage or not
4	Press up key, motor run down, press down key, motor run up	set change direction on control or exchange the up and down wire of motor



# AC512-02 AC Trigger Manual V1.0.1



AC512-02 AC Trigger



Receiver

## I. Features

1. High sensitivity;
2. Remembering the loading current automatically, personalized design more convenient to operate;
3. Over-current protection function with built in protector tube, more safety;
4. Strong anti-interference ability and signal transmission ability;
5. SMT craft, moisture-proof handle.

## II. Parameters

Model No.	Rated Voltage	Standby Power	Working Temp	Frequency	Transmit Power	Loading Power
AC512-02	220VAC 50Hz (Optional 120VAC 60Hz)	≤ 1W	-20℃~55℃	433.92MHz	≤10mW	≤1000W



### Attention

\*Please obey below rules on the basic of effective electricity allowance\*



Do cut off power supply before connection



Note Antistatic

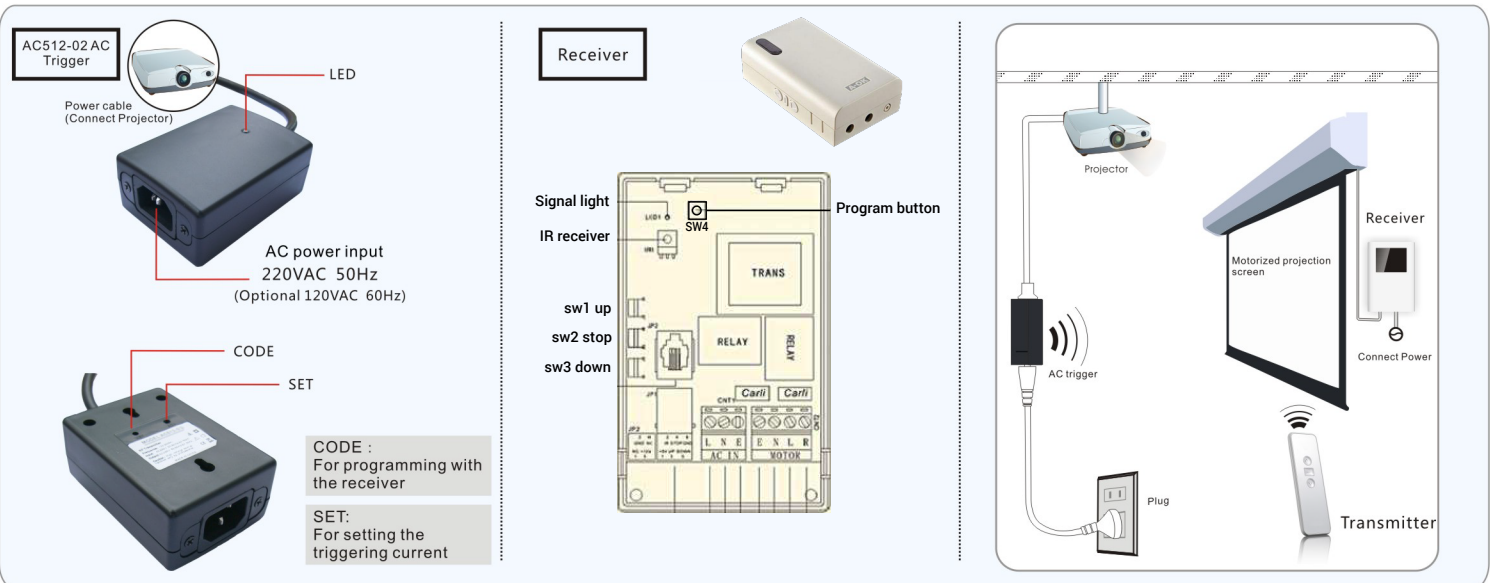


Make sure connect Earth wiring

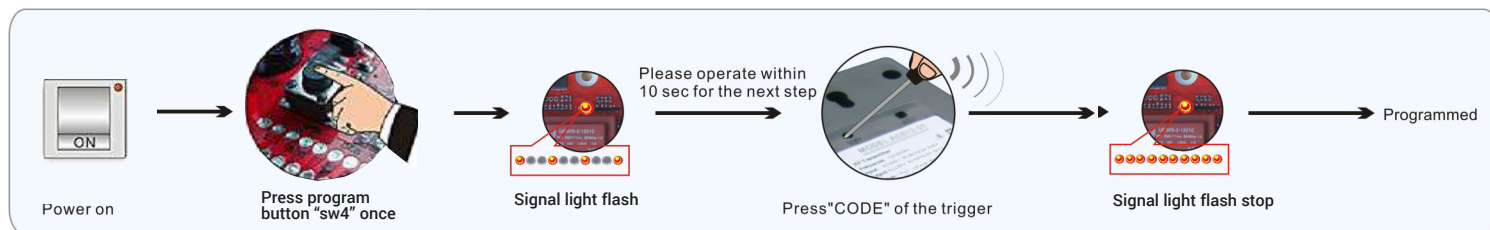


Handle with care

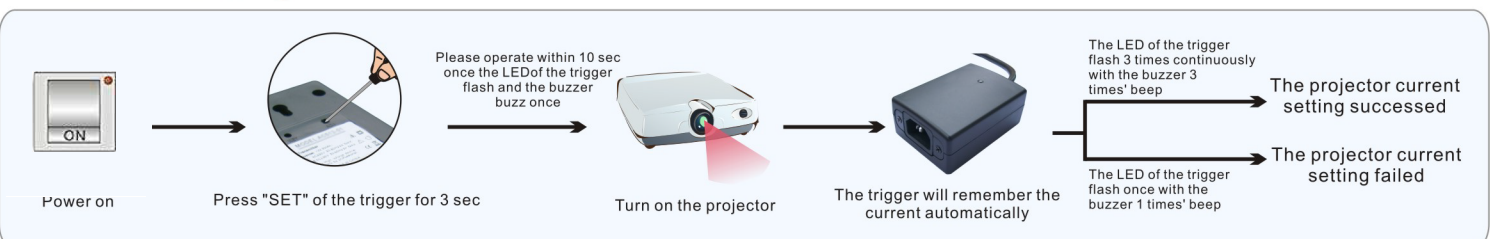
## III. Connection and instruction



## IV. CODEram



## V. Current setting



Note: Turn on the projector, the projection screen goes down automatically, turn off the projector, the projection screen goes up automatically.