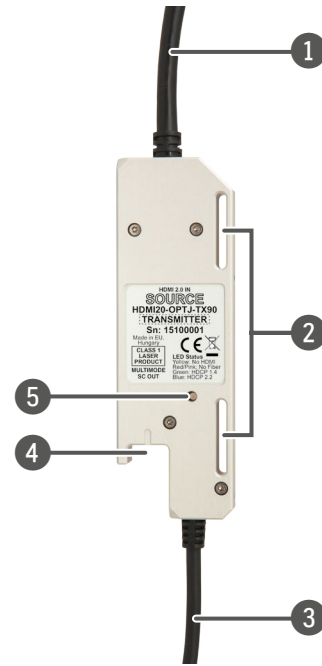




Quick Start Guide

HDMI20-OPTJ-TX90
HDMI20-OPTJ-RX90

Bottom View - Transmitter / Receiver



1 HDMI plug

HDMI connector plug for HDMI audio and video signal transmission. The following protocols and features are supported:

- HDMI 1.x and HDMI 2.0 audio/video - the module automatically selects between HDMI 2.0 and HDMI 1.x based on the type of the signal source or sink device.
- HDCP 1.4 or HDCP 2.2 encryption - the module automatically selects between HDCP 1.4 and HDCP 2.2 based on the type of the signal source or sink device.
- EDID, CEC, and HDCP transparent.

2 Loopholes

Loopholes for self-fastening belts for mounting. See the details in the *Mounting Options* section.

3 USB-A plug

Standard USB-A plug to USB-compatible (1.1 or higher) host port. The following features are supported:

- The receiver and transmitter can be fully powered from the USB port. This capability is available even if the attached USB host port is "power only".
- For transmitter only: USB power is fully compatible with HDMI power. The transmitter performance will not degrade if the HDMI power and USB power are available simultaneously. Similarly, connecting USB power and HDMI power simultaneously will not cause any damage to the attached USB host or HDMI video source.

4 SC fiber connector

SC fiber optical connector. Connect a multimode fiber optical cable between the transmitter and the receiver. The following features are supported:

- All communication, including audio and video transmission, and HDCP over one optical fiber.
- The connector supports open fiber detection with high speed laser shutdown.

5 Status LED

Indicates the current status of the transmitted or received optical and HDMI signals, and the HDCP-encryption.



OFF

Module is not powered.



BLINKING (red)

No fiber link is detected.



BLINKING (yellow)

Fiber link is established, but no HDMI cable is detected (5V is not detected on the source or hotplug is not detected on the sink).



ON (yellow)

Fiber link is established, cable is connected, but no HDMI signal.



BLINKING (green)

Fiber link is established, signal is not HDCP-encrypted.



ON (green)

Fiber link is established, signal is encrypted with HDCP 1.4.



BLINKING (blue)

Fiber link is established, HDCP 2.2 initialization is in progress.



ON (blue)

Fiber link is established, signal is encrypted with HDCP 2.2.

Troubleshooting

The following LED statuses mean incorrect extender modes. These can happen when the USB-A plug of the extender is connected to a USB connector where the data transmission is enabled.

Solution: Use the supplied power adaptors.



BLINKING (pink)

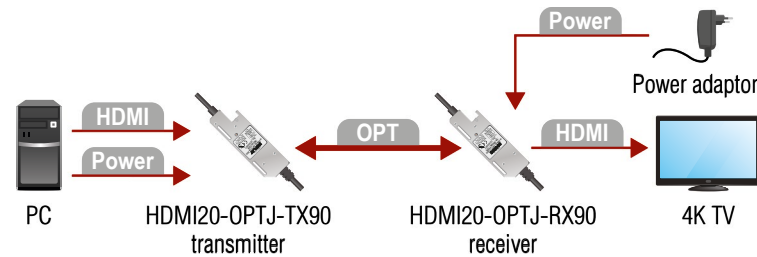
The device is in bootloader mode.



ON (pink)

The device is in bootloader mode and bootloader is configured by the USB host.

Connecting Steps



Follow the installation steps to connect the extenders between the source and sink devices:

OPT

Connect the **multimode fiber optical cable** to the SC fiber connector of the **receiver**.

HDMI

Connect the **HDMI plug of the receiver** to the input port of the sink device (e.g. 4K TV). The extender reads the EDID from the display (projector, monitor, etc), and outputs the video signal according to the set resolution.

Power

Power on the **receiver** by choosing one of the powering options below:

- Connect the **USB plug of the receiver** to the power adaptor.
- Connect the **USB plug of the receiver** to the USB connector of the sink device.

OPT

Connect the **multimode fiber optical cable** to the SC fiber connector of the **transmitter**.

HDMI

Connect the **HDMI plug of the transmitter** to the output port of the source device (e.g. PC).

Power

Finally power on the **transmitter** by choosing one of the powering options below:

- Connect the **USB plug of the transmitter** to the power adaptor.
- Connect the **USB plug of the transmitter** to the USB connector of the source device.
- Connect the **HDMI plug of the transmitter** to the output port of the source device (e.g. PC). If the HDMI source device is able to provide enough 5V DC current (500mA), there is no need for external 5V DC power. The extender is powered immediately when the source device is switched on.

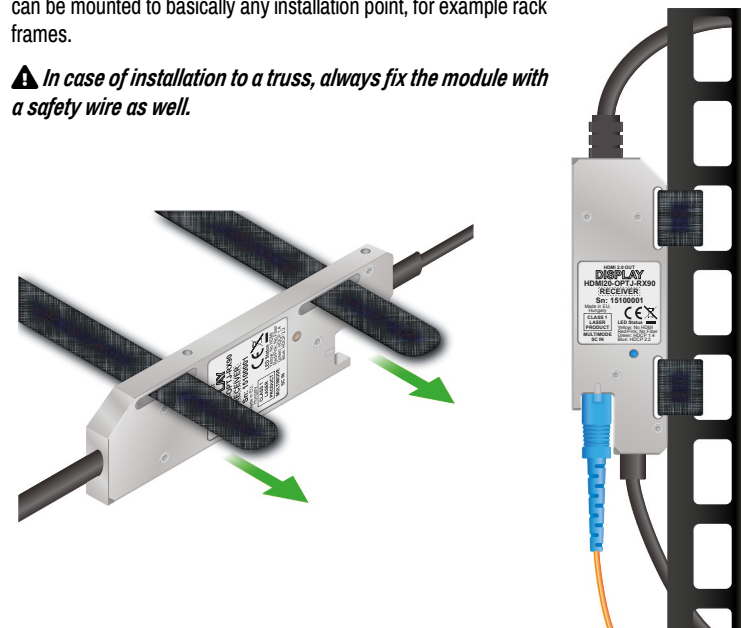


Check the Status LED. When the connection is successful, the LEDs on the transmitter and receiver will appear green or blue depending on the HDCP-encryption.

Option 2 - Mounting the device using self-fastener

Use the two tie-down loops of the enclosure to thread through the self-fastener. The modules can be mounted to basically any installation point, for example rack frames.

⚠ In case of installation to a truss, always fix the module with a safety wire as well.



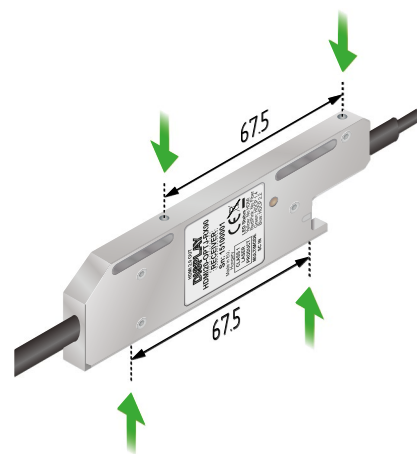
Option 1 - Mounting the device to a rack shelf

The transmitter and the receiver modules have two mounting holes each with inner threads on the two narrow sides. The distance between the holes is 67,5 mm.

Fasten the device by the screws packaged with the following, compatible mounting accessories:

- Under-desk mounting kit
- Under-desk double mounting kit
- 1U high rack shelf

The required screw type: PZ flat head



(M3x6mm)

Compatible Products

The TX and RX devices are only compatible with each other.

Mounting Options

The ergonomic enclosure provides two possible methods for mounting the device.

To order mounting accessories, please contact sales@lightware.com.

Further Information

The Product Brief of the extender is available on www.lightware.com. See the [Downloads](#) section on the dedicated product page.

Contact us

sales@lightware.com

+36 1 255 3800

support@lightware.com

+36 1 255 3810

Lightware Visual Engineering LLC.

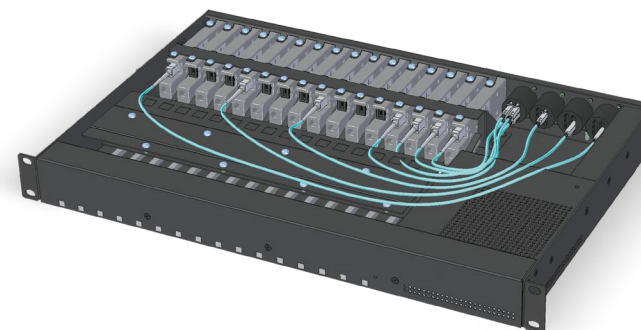
Peterdy 15, Budapest H-1071, Hungary

Doc. ver.: 1.6
19200229

Option 3 - Mounting the device to the OPTJ Power tray

The OPTJ Power tray is a 1RU size housing accessory, which can enclose up to 16 pcs of HDMI20-OPTJ-TX/RX90 units, while also providing power source for every installed device. Three different models are available:

- **SC** model: built with 8x SC duplex fiber optical connectors for 16x multimode SC fiber optical cables.
- **NTD** model: 4x Neutrik NO2-4FDW-A connectors for 4x Neutrik opticalCON DUO series cables or 8x LC fiber optical cables.
- **NTQ** model: 4x Neutrik NO4FDW-A connectors for 4x Neutrik opticalCON QUAD series cables.



To order OPTJ Power tray series devices, please contact sales@lightware.com.

Specification

General

Compliance	CE
EMC Immunity	IEC/EN 55035:2017
EMC Emission	IEC/EN 55032:2015
Safety	IEC/EN 62368-1:2014
Warranty	3 years
Cooling	Passive
Power consumption - TX (1080p60 / 4K60).....	1.5 W / 2 W
Power consumption - RX (1080p60 / 4K60)	0.8 W / 1 W
Operating temperature	0 to +50°C (+32 to +122°F)
Storage temperature.....	-40 to +85°C (-38 to +185°F)
Operating humidity	10% to 90%, non-condensing

HDMI Port

Connector type	19-pole HDMI Type A plug
Standard	DVI 1.0, HDMI 1.4, HDMI 2.0
Color space.....	RGB, YCbCr 4:4:4, YCbCr 4:2:2, YCbCr 4:2:0
Maximum resolution	4096x2160@60 Hz, 36 bit deep color support
HDCP compliancy	HDCP 1.4 and HDCP 2.2

Fiber Optical Port

Connector type	SC simplex receptacle
Laser wavelengths.....	High speed lane: 780, 800, 825, 850 nm
.....	Low speed lane: 910, 980 nm
Laser class specification.....	Class 1 (if enclosure removed: Class 3R)
Compliance.....	IEC/EN 60825-1:2014-05 Ed. 3.0
.....	21CFR Subchapter J Parts 1040.40 and 1040.11
Output OMA.....	-6 dBm
OMA sensitivity	-12,5 dBm

Power

Power supply (TX)	External power adaptor / USB / HDMI
Power supply (RX).....	External power adaptor / USB
Power adaptor	In 100-240 V AC 50/60 Hz, Out 5V DC, 1 A
Power connector.....	USB-A plug

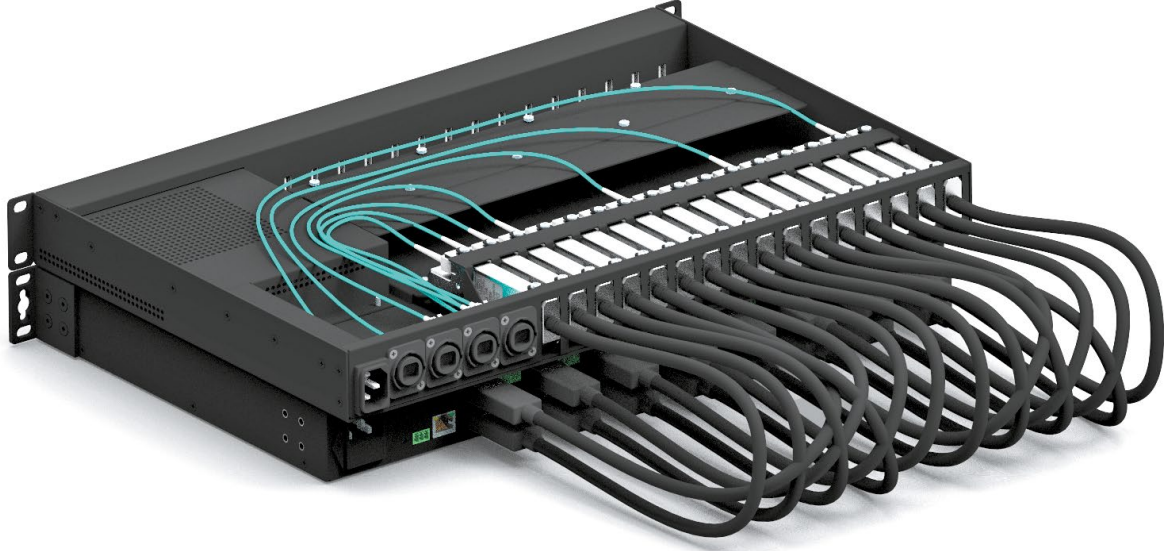
Enclosure

Material	Aluminum
Enclosure dimensions in mm	110.5 W x 35.5 D x 11.4 H
Enclosure dimensions in inch.....	4.35 W x 1.40 D x 0.44 H
Weight	145 g (0.32 lbs)

Rack mountable.....	Yes, with 1U high rack shelf
Length of pigtail HDMI cable	800 mm (31.5 inch)
Length of pigtail USB cable	1000 mm (39.4 inch)

Typical Application

HDMI 2.0 optical matrix assembly: by connecting the HDMI connectors outputs of the fully populated **OPTJ Power tray** with the input and output ports of an **MX2-8x8-HDMI20-Audio-L** matrix, a HDMI 2.0 optical matrix system can be created with Full 4K UHD at 60 Hz 4:4:4 maximum resolution.



Features

- Resolutions up to 4K@60Hz with RGB 4:4:4 colorspace
- 18 Gbps bandwidth
- HDMI 2.0, HDMI 1.x, and DVI 1.0 compliant
- HDCP 2.2, HDCP 1.4 compliant and CEC, EDID transparent
- 36-bit deep color support
- 3D signal compatibility with frame packing, side-by-side and top-bottom formats
- Zero frame delay – no latency
- No compression
- One MultiMode fiber cable up to 600 meters on case of 4K60 resolution
- Supports all HDMI audio formats: Dolby TrueHD and DTS-HD Master Audio
- Plug & Play
- SC optical connector
- Solid aluminum housing for professional use

Maximum Extension Distances

Resolution, Pixel clock rate	OM1	OM2	OM3	OM4
1280x720p60 Hz	800 m	1000 m	2500 m	2500 m
1920x1080p60 Hz	500 m	1000 m	2500 m	2500 m
3840x2160p30 Hz (4k30 4:4:4)	200 m	600 m	1500 m	1500 m
3840x2160p60 Hz (4k60 4:2:0)	200 m	600 m	1500 m	1500 m
3840x2160p60 Hz (4k60 4:4:4)	Not supported	300 m	600 m	600 m
4096x2160p60 Hz (DCI 4K60)	Not supported	300 m	600 m	600 m

Maximum Fiber Cable Extension Distances

	OM1	OM2	OM3	OM4
	(62.5/125)	(50/125)	(50/125)	(50/125)
For all resolutions	150 m	350 m	800 m	1100 m

Important Safety Instructions

Please read and keep the information in the attached safety instructions supplied with the product before starting using the device.

WARNING

To prevent injury, the apparatus is recommended to be securely attached to the floor/wall or mounted in accordance with the installation instructions. The apparatus shall not be exposed to dripping or splashing, and no objects filled with liquids, such as vases, shall be placed on the apparatus. No naked flame sources, such as lit candles, should be placed on the apparatus.

WEEE (Waste Electrical & Electronic Equipment)

Correct Disposal of This Product

This marking shown on the product or its literature indicates that it should not be disposed with other household wastes at the end of its working life. To prevent possible harm to the environment or human health from, uncontrolled waste disposal, please separate this from other types of wastes and recycle it responsibly to promote the sustainable reuse of material resources.



Household users should contact either the retailer where they purchased this product, or their local government office for details of where and how they can take this item for environmentally safe recycling.

Business users should contact their supplier and check the terms and conditions of the purchase contract. This product should not be mixed with other commercial wastes for disposal.